

Simple Approach



**The Rivendale Lodge Royal Arch Riverside Park, By Fettercairn
AB30 1BA**

Prices from £225,000

The Rivendale Lodge Royal Arch Riverside Park, By Fettercairn, AB30 1BA

Simple Approach are pleased to welcome to the open market an extensive range of luxury park home lodges, set on the doorstep of Royal Deeside by Fettercairn, Fettercairn is a small village in Scotland, northwest of Laurencekirk in Aberdeenshire, steeped in history and magnificent scenery and only a short drive from some of the world famous golf courses and beautiful beaches. Royal Arch Riverside Park is set in tranquil surroundings and offer a host of on site activities but is only a short distance away for the A90 running between Aberdeen and Dundee City's. With a wide choice of lodges each fully equipped, designed and fitted out to a high standard Including Hot Tubs with privacy screens, fully decked and keter sheds for external storage. Site visit and viewing is essential to fully appreciate the stunning location and high spec. lodges on offer, call or e-mail Simple Approach Dundee 01382 646133 or info@simpleapproachdundee.co.uk

* Full T&C's to be discussed with Royal Arch Riverside Park

* All illustrations are approximate and should be verified on site when viewing

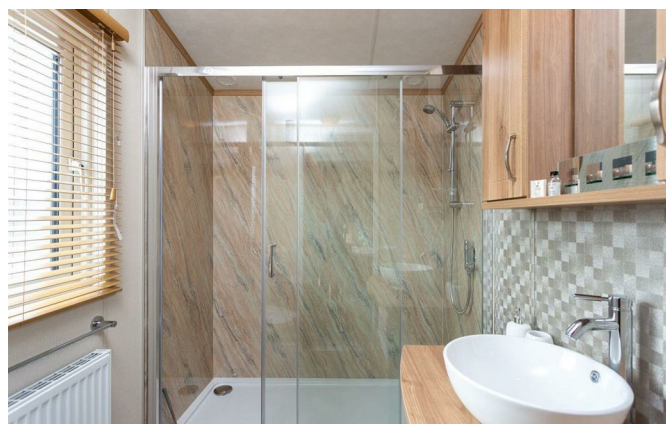
Location

Royal Arch Riverside Park is a beautiful, new and exclusive holiday park on the doorstep of Royal Deeside and embraces the stunning views, wildlife and history of Scotland.

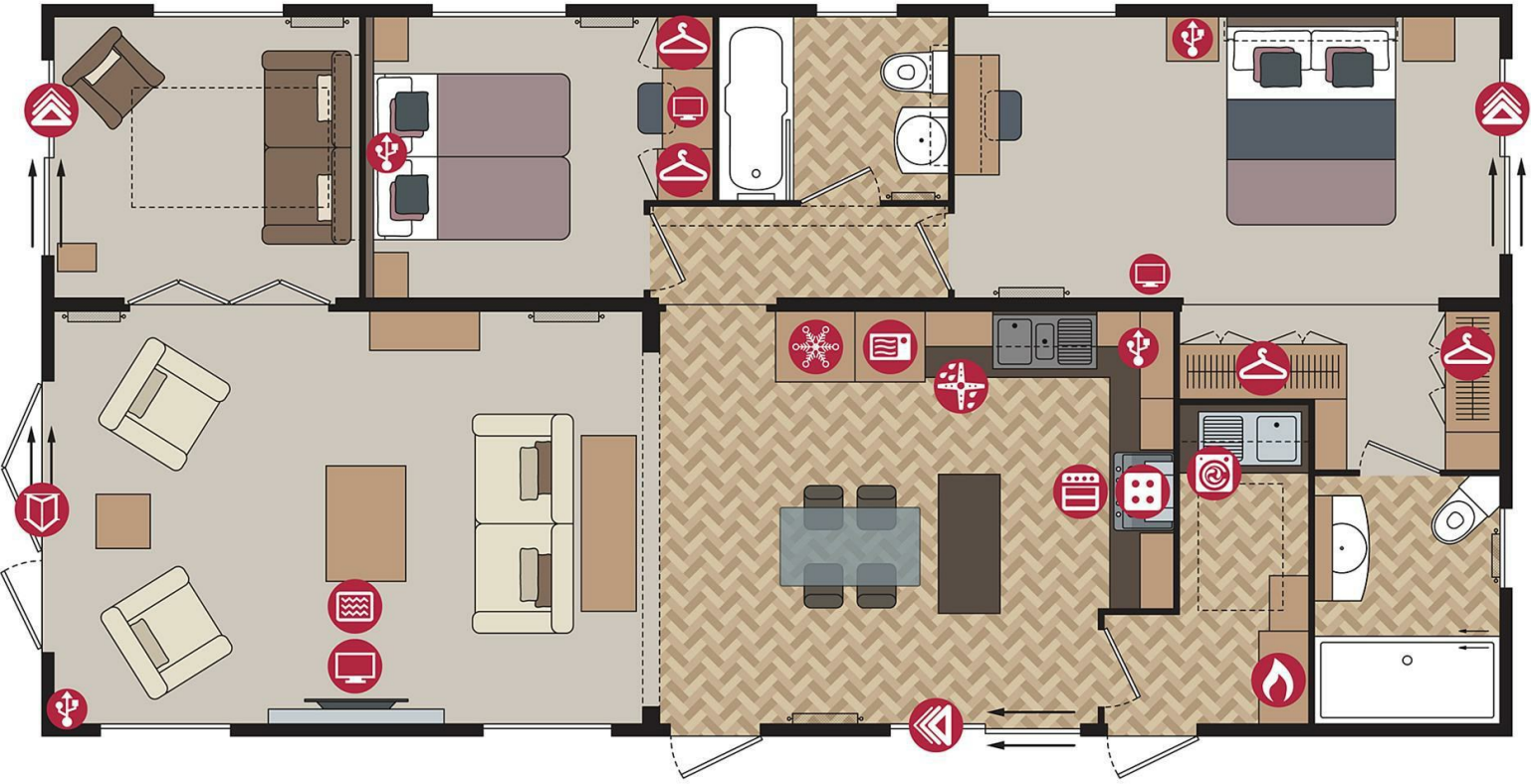




- Luxury Park Homes
- Peaceful Countryside Living
- Decorated With Modern Taste and to High Standard
- Spacious Living Space Throughout
- Hot Tub and Privacy Screen
- Keter Shed Storage
- Viewing Essential



Rivendale Lodge 44ft x 22ft • 2 bedroom (Utility)



Energy Efficiency Rating		
	Current	Potential
Very energy efficient - lower running costs		
(92 plus) A		
(81-91) B		
(69-80) C		
(55-68) D		
(39-54) E		
(21-38) F		
(1-20) G		
Not energy efficient - higher running costs		
Scotland		EU Directive 2002/91/EC
Environmental Impact (CO ₂) Rating		
	Current	Potential
Very environmentally friendly - lower CO ₂ emissions		
(92 plus) A		
(81-91) B		
(69-80) C		
(55-68) D		
(39-54) E		
(21-38) F		
(1-20) G		
Not environmentally friendly - higher CO ₂ emissions		
Scotland		EU Directive 2002/91/EC